



Dwr Cymru Welsh Water Developer Services

Flintshire CC Environment overview and Scrutiny meeting:
13th April 2016



Firstly a little about us...



Miriam Wasik-Evans
Project Engineer



Henry Jones-Hughes
Development Control Officer

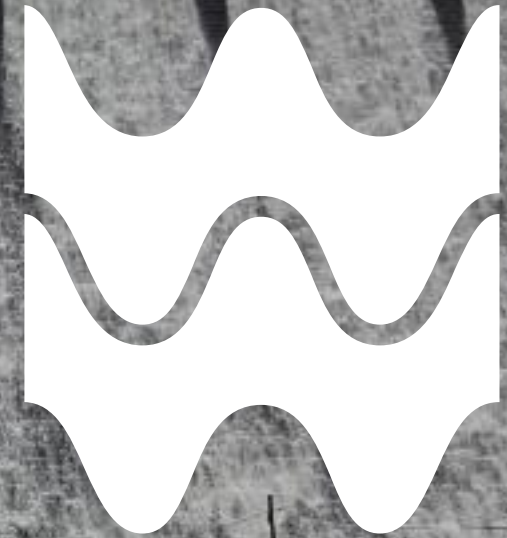
Agenda



- Welsh Water – Who we are
- Developer Services
- Our Planning function
- Types of sewer network
- Key considerations
- Design and Build
- Our Approach to Surface Water
- Our relationship with Flintshire Council

Welsh Water Dwr Cymru

- We provide clean drinking water and take it away afterwards to clean.
- Different to other water companies as we have no shareholders.
- We are a not for profit water company
- 3000 employees across wales provide our service



Who we are...

- 100 + staff responsible for new connections, new infrastructure and protecting our assets.

Last year we;

- Responded to over 6,000 planning applications
- Served 400 customers a day, including developers, customers and local authorities
- Connect in excess of 6,500 new homes to our water and sewerage networks every year
- Laid over 35,000m of new water pipes

<http://www.wearewelshwater.com/#stories/view/developer-services>

Who we are...

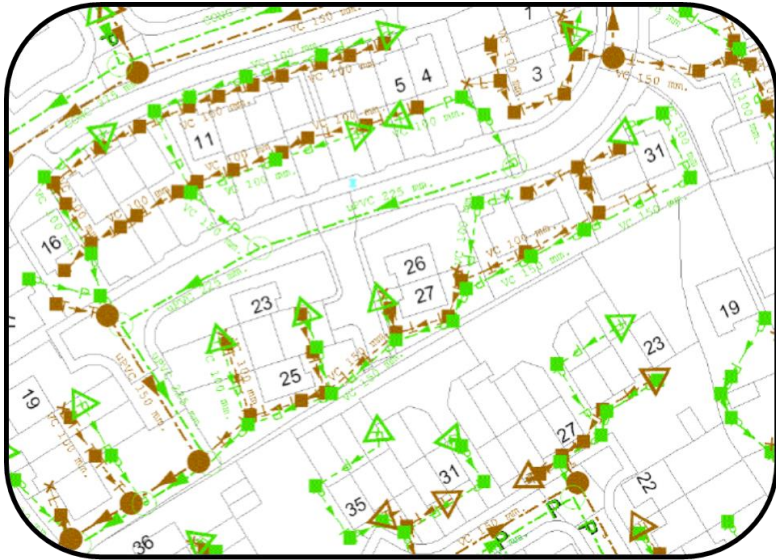


Our Planning Function

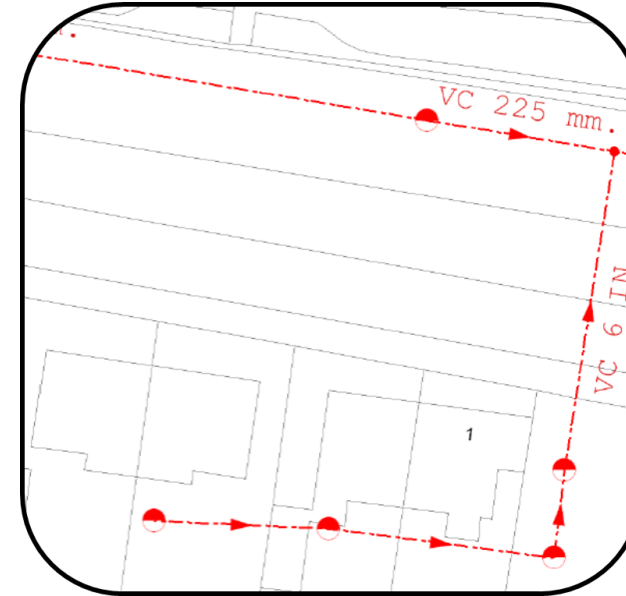
- Aim of the team;
 - Statutory Consultee: duty to provide a consultation response on certain applications within 21 days
 - Advise developers about our sewerage/water network
 - Helping to advise where Welsh Water should focus future investment
 - Supporting the development and adoption of Local Development Plans
- Protect existing customers and environment by:
 - Offering pre planning advice
 - Commenting on planning applications
 - Representing DCWW at appeal



Types of sewer network



Separate surface water and foul sewer systems
Surface Water Sewers discharge to rivers, watercourse etc.
Foul Sewers discharge to Waste Water Treatment works



Combined Sewer
Networks

Single pipe system for both foul
and surface water sewers

Key considerations...

Clean water supply



Waste Treatment Works



Sewer capacity



Surface water



The Design and Build function

- Technically assess new drainage submissions for adoption
- Technically assess diversions or alteration to existing assets
- Provide a facility to requisition new connections where developers have struggled to connect to our assets
- Design, plan and construct off-site reinforcement



Design and Build limitations

- Technical assessments can only go so far, if there is a problem in the area and the site has planning permissions we have no ability to refuse a connection under the Water Industry Act 1991
- We are unable to ask a developer to fix problems on our network, we can only request them to fund reinforcement of our network to ensure that the situation is not made worse, so long as there is a suitably worded planning condition.
- Large scale improvements to treatment works would be delivered by a separate function and may need to have business funding to supplement any developer contribution.
- Developers and highway departments want sewers to be adopted, however due to guidance and legislation we are unable to adopt any type of soft SuDS elements, limited to pipes.

**Planning
is Key!**

Our Approach to Surface Water

- Hierarchical approach
 - Infiltration
 - Watercourse,
 - Surface Water Sewer
 - Combined.
- The use of Sustainable Urban Drainage can often lead to more manageable surface water run-off rates
- Developers should be considering drainage at an early stage and providing evidence that real on-site investigation has been carried out (Not just a desktop study).
- We often find that the initial method of drainage stated on application forms can not be achieved
- Misconception that DCWW have powers to stop developers connecting surface water into the system (Barratt Case).



Our relationship with Flintshire Council

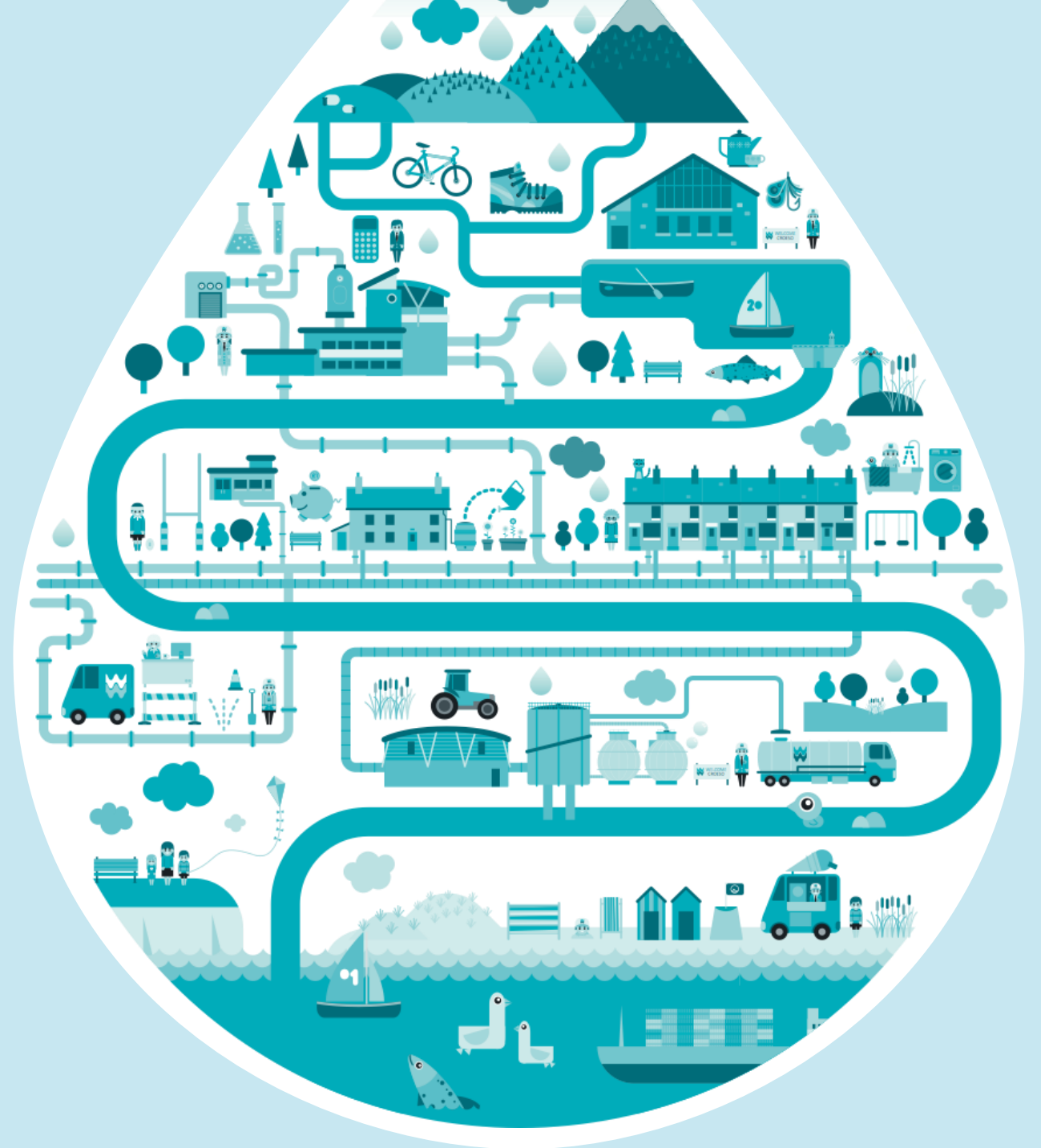


- Surface water drainage is often an afterthought, emphasis on early engagement.
- Consultation at planning stage is critical and being consulted on the right type of application.
- The importance of using drainage conditions that have been offered and consultation with Welsh Water during the discharge of drainage conditions.
- Support the Surface Water SPG





Dŵr Cymru
Welsh Water



Diolch / Thank you

dwrcymru.com